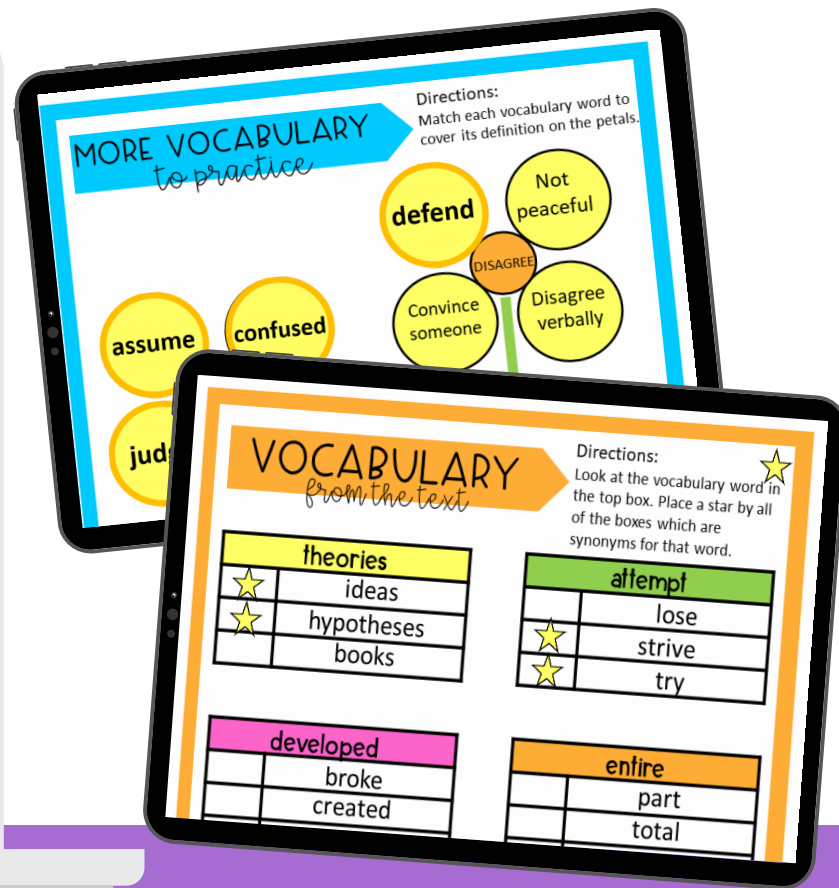
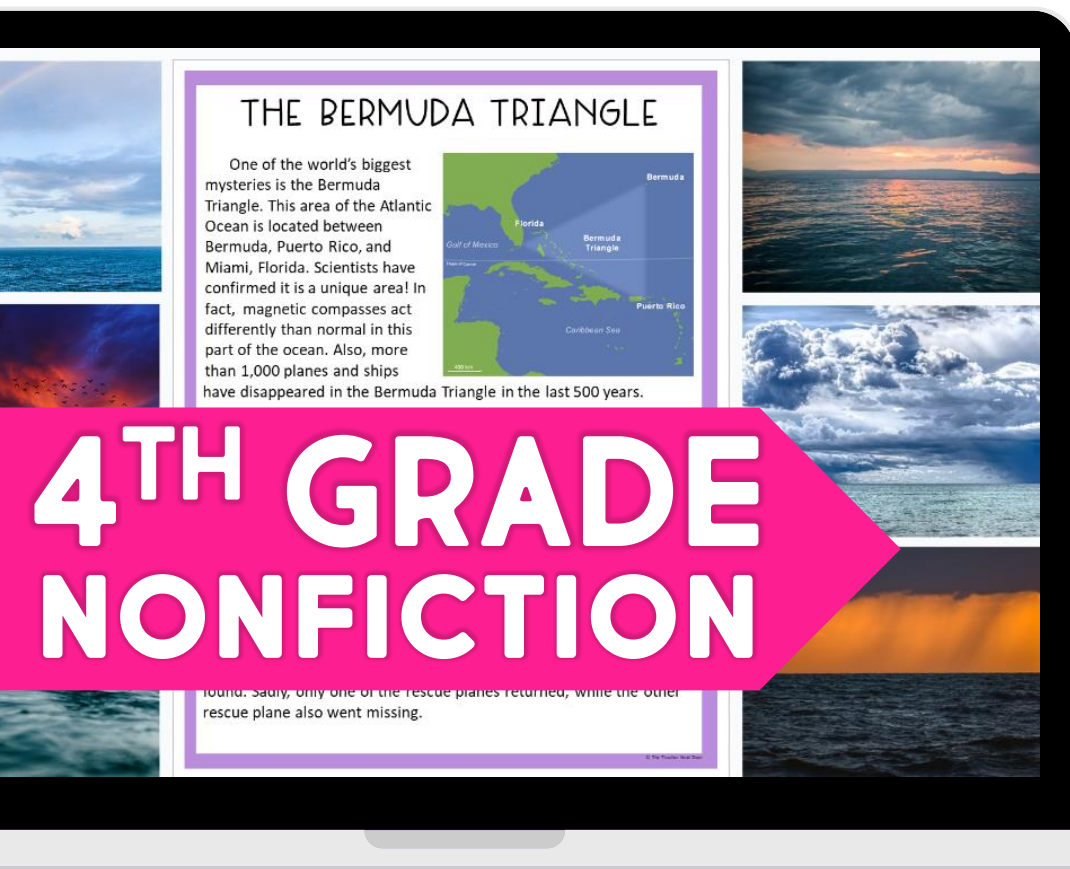


KNOWLEDGE BUILDERS



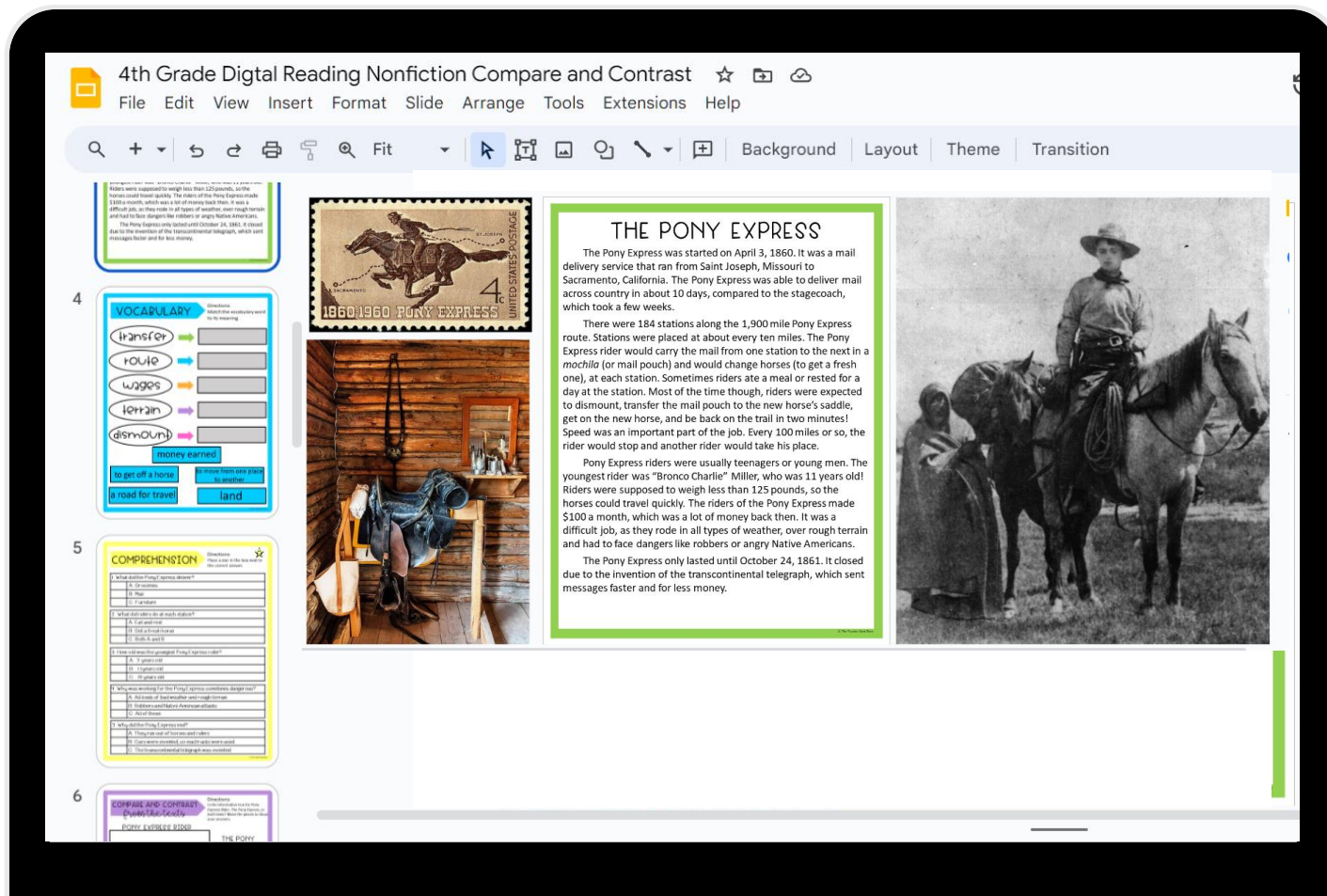
CONTEXT CLUES

THE TEACHER NEXT DOOR

DIGITAL FORMAT

DRAG AND DROP – INTERACTIVE
NO-PREP, EASY TO ASSIGN

JUST CLICK AND SEND! 



4th Grade Digital Reading Nonfiction Compare and Contrast

File Edit View Insert Format Slide Arrange Tools Extensions Help

Search + Fit Background Layout Theme Transition

VOCABULARY

Transfer: to move something from one place to another

Route: a path or way from one place to another

Wages: money earned

Terrain: the features of a particular area of land, such as mountains, rivers, and plains

Dismount: to get off a horse

COMPREHENSION

1. What did the Pony Express deliver?

A. Mail

B. Money

C. Food

D. Water

2. Why did riders have to change horses so often?

A. The horses were too tired.

B. The horses were too old.

C. The horses were too young.

D. The horses were too small.

3. How did the Pony Express riders survive the journey?

A. They rode all day and night.

B. They rode only during the day.

C. They rode only at night.

D. They rode only during the week.

4. Why was the Pony Express important?

A. It was the first mail service across the country.

B. It was the first mail service across the world.

C. It was the first mail service across the ocean.

D. It was the first mail service across the sky.

5. What was the Pony Express's main purpose?

A. To deliver mail.

B. To deliver money.

C. To deliver food.

D. To deliver water.

6. Why did the Pony Express stop in 1861?

A. The telegraph was invented.

B. The telegraph was destroyed.

C. The telegraph was stolen.

D. The telegraph was broken.

COMPARE AND CONTRAST

Compare the Pony Express to the stagecoach.

Contrast the Pony Express to the stagecoach.

1. The Pony Express was faster than the stagecoach.

2. The Pony Express was more dangerous than the stagecoach.

3. The Pony Express was more expensive than the stagecoach.

4. The Pony Express was more reliable than the stagecoach.

5. The Pony Express was more comfortable than the stagecoach.

6. The Pony Express was more convenient than the stagecoach.

7. The Pony Express was more popular than the stagecoach.

8. The Pony Express was more useful than the stagecoach.

9. The Pony Express was more important than the stagecoach.

10. The Pony Express was more successful than the stagecoach.



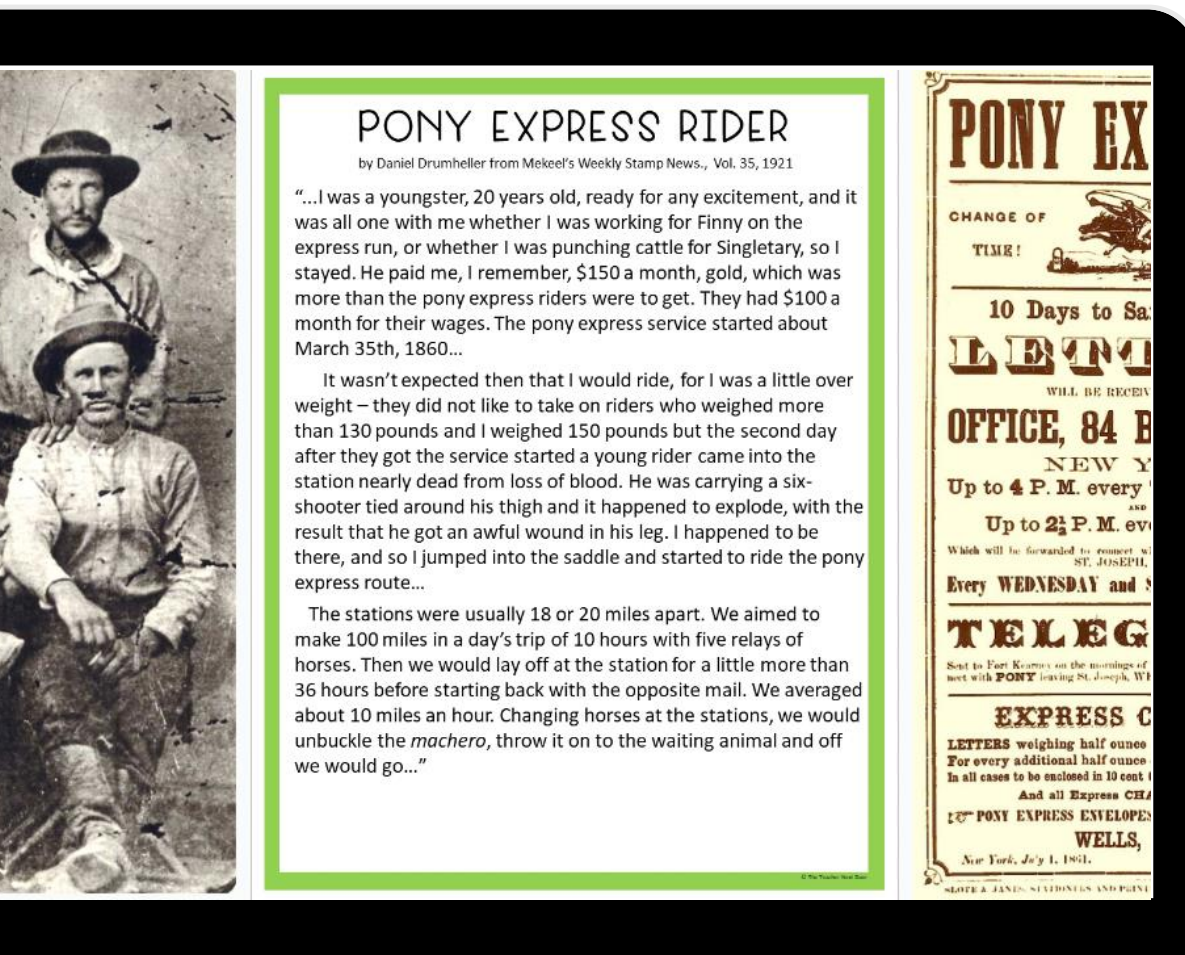
THE TEACHER NEXT DOOR

TWO PASSAGES

READING SKILL FOCUSED

HIGH-INTEREST STORIES

THAT KEEP STUDENTS ENGAGED!



PONY EXPRESS RIDER
by Daniel Drumheller from Mekeel's Weekly Stamp News., Vol. 35, 1921

"...I was a youngster, 20 years old, ready for any excitement, and it was all one with me whether I was working for Finny on the express run, or whether I was punching cattle for Singletary, so I stayed. He paid me, I remember, \$150 a month, gold, which was more than the pony express riders were to get. They had \$100 a month for their wages. The pony express service started about March 35th, 1860...

It wasn't expected then that I would ride, for I was a little over weight – they did not like to take on riders who weighed more than 130 pounds and I weighed 150 pounds but the second day after they got the service started a young rider came into the station nearly dead from loss of blood. He was carrying a six-shooter tied around his thigh and it happened to explode, with the result that he got an awful wound in his leg. I happened to be there, and so I jumped into the saddle and started to ride the pony express route...

The stations were usually 18 or 20 miles apart. We aimed to make 100 miles in a day's trip of 10 hours with five relays of horses. Then we would lay off at the station for a little more than 36 hours before starting back with the opposite mail. We averaged about 10 miles an hour. Changing horses at the stations, we would unbuckle the *machero*, throw it on to the waiting animal and off we would go..."

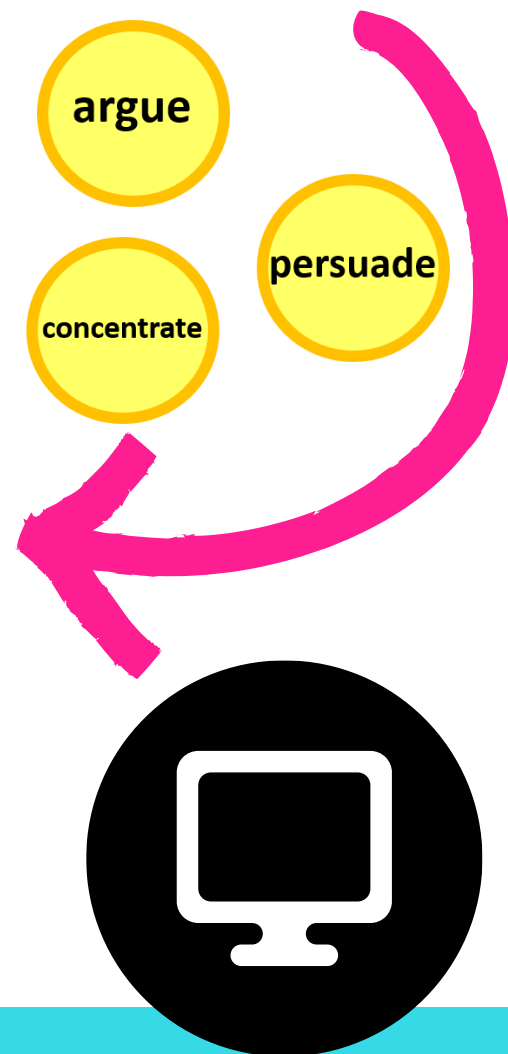
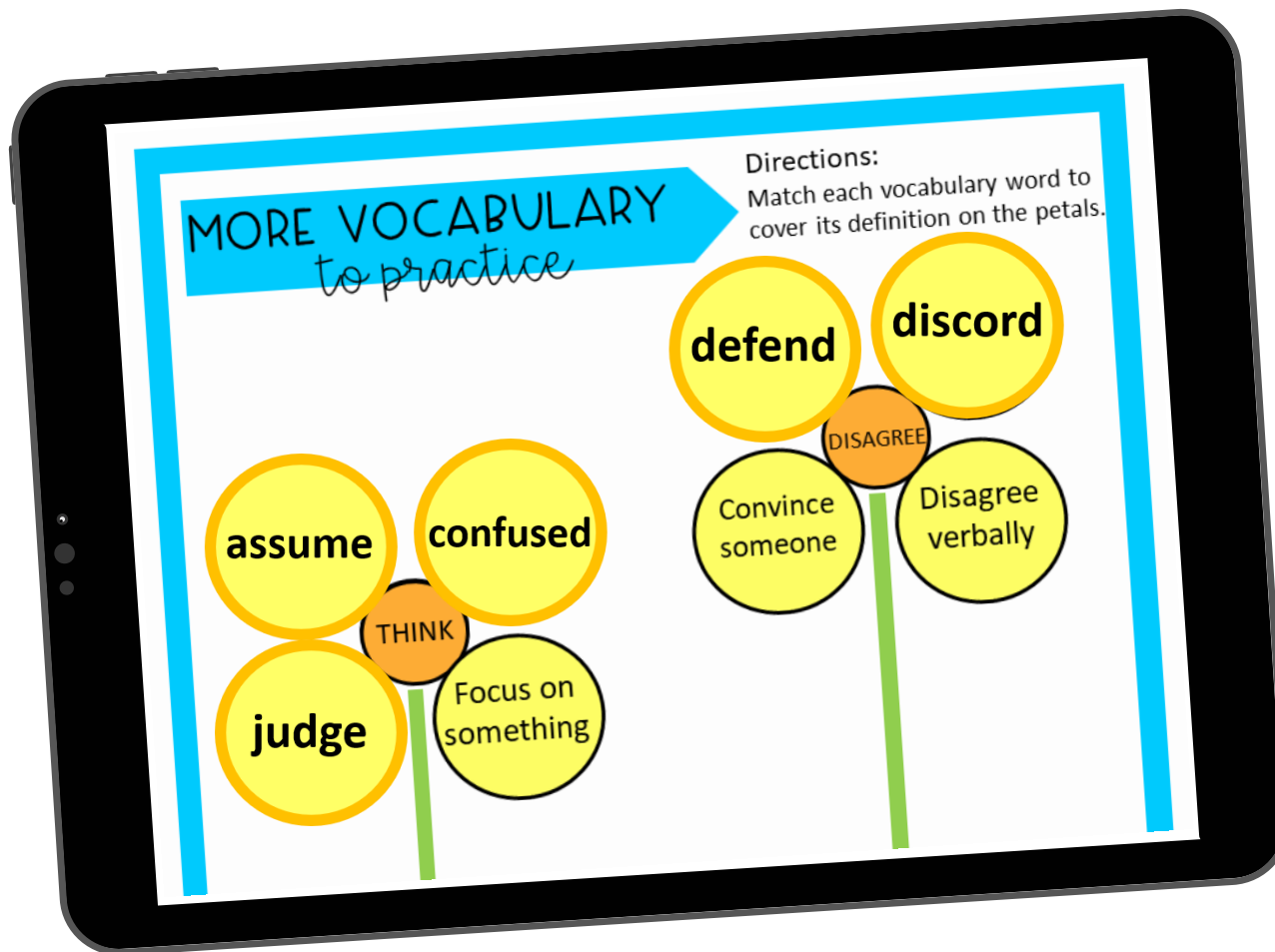
PONY EX
CHANGE OF
TIME!
10 Days to Sa
LETT
WILL BE RECEIV
OFFICE, 84 B
NEW Y
Up to 4 P. M. every
AND
Up to 2½ P. M. ev
Which will be forwarded to connect w
ST. JOSEPH,
Every WEDNESDAY and
TELEG
Sent to Fort Kearney on the mornings of
next with **PONY** leaving St. Joseph, Mo
EXPRESS C
LETTERS weighing half ounce
For every additional half ounce
In all cases to be enclosed in 10 cent
And all Express CH
12th PONY EXPRESS ENVELOPE
WELLS,
New York, July 1, 1861.
SLOTE & JAMES, STATIONERS AND PRINT

USE FOR
CENTERS OR
INDEPENDENT
WORK



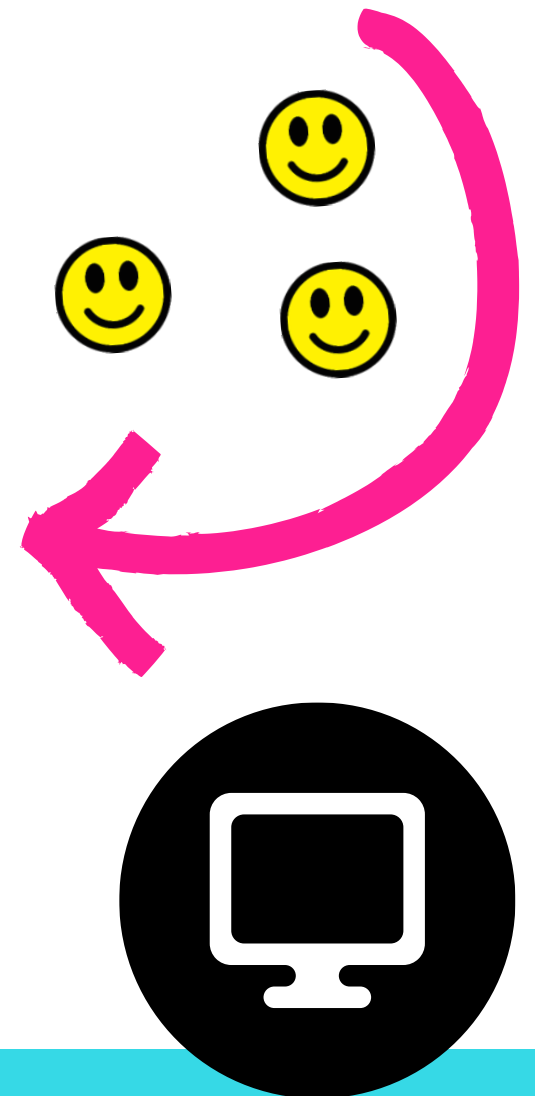
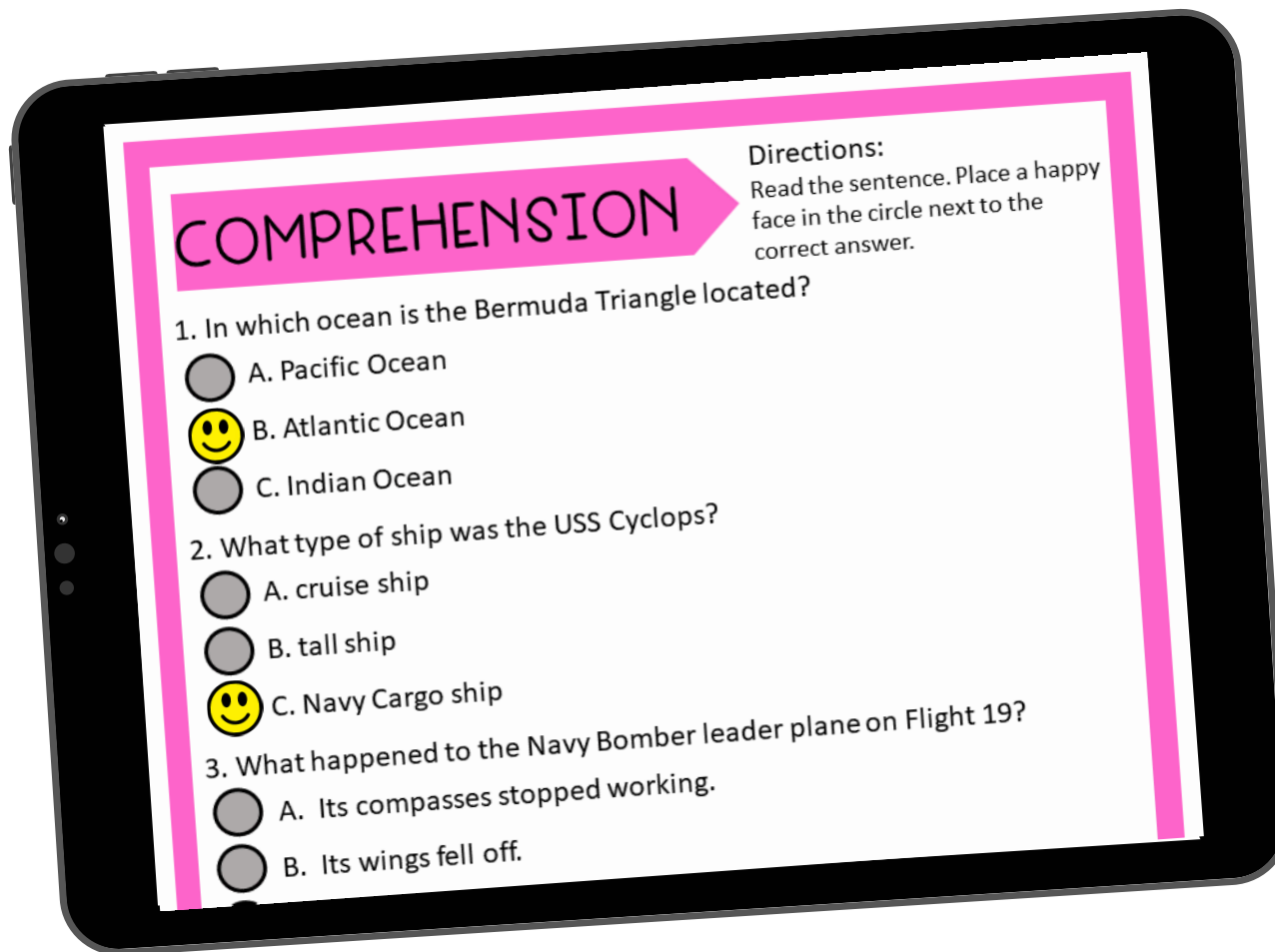
VOCABULARY

TARGET WORDS IN CONTEXT
FROM THE PASSAGE
WITH INTERACTIVE PRACTICE!



COMPREHENSION

STUDENTS PRACTICE
DIGGING INTO THE TEXT
TO SHOW UNDERSTANDING!



SKILLS FOCUSED

REINFORCE

THE READING SKILL

USING A VARIETY OF APPROACHES!

VOCABULARY

from the text

Directions:
Match the definition of the
underlined word to the
related context clue.

CONTEXT CLUES	WORD'S MEANING
1. Her family was <u>wealthy</u> and she attended the finest schools.	rich
2. ...they wrote books describing their adventures, including the lands they saw and the people they <u>encountered</u> .	found
3. They decided to <u>venture</u> north into the mountains to do some climbing.	
4. After a disastrous first climb, they <u>descended</u> from the mountain...	

to move downward

guessed smartly

traveled to



ASK THE EXPERTS

**"GREAT FOR
PRACTICING THE
SKILL!"**

– S. T., 4TH GRADE TEACHER

**"PERFECT VOCABULARY
RESOURCE!"**

– ASHLI, 4TH GRADE TEACHER

**"MY STUDENTS LOVED
THIS RESOURCE!"**

– C. T., 4TH GRADE TEACHER

KNOWLEDGE BUILDERS FAQ

Which classrooms would benefit from a Digital Reading Context Clues Unit like this?

This set of Context Clues using nonfiction Knowledge Builders is for you **if your reading curriculum is lacking** when it comes to focused reading skills practice or your students could benefit from more content knowledge. If you'd like to **stop endlessly searching for high-interest reading activities** that align with this reading standard and are looking for **easy-to-use** reading activities, this resource is for you.

What age is best suited for this Knowledge Builder?

This digital reading unit is **aligned to 4th grade reading standards**. It can also be used with **older students in need of extra practice** and support or for **enrichment for younger students**. Teachers, homeschool educators, and tutors have used the materials successfully.

How can this resource be used in my classroom?

This resource is **extremely versatile**. Many teachers will use the knowledge builder as part of their weekly literacy stations. You can also use the digital unit for independent work, partner practice, test prep, and for whole-class lessons. Our **best recommendation is to use them for independent or partner work while you meet with small groups to differentiate**.

WHO IS TTND?

At **The Teacher Next Door**, we know that you strive to be an effective reading teacher while maintaining a healthy work-life balance. In order to do that, you need resources that are impactful yet simple. The problem is that most reading resources and curriculums out there are far from simple. The pages upon pages of daily lesson plans are just plain overwhelming. We believe teachers should be living their lives outside the classroom and not spending hours lesson planning and searching for resources.

Now, more than ever, teachers need space to be themselves, which is why we create and support teachers with time-saving tips and standards-aligned resources.

We can't wait to help you get started.

A NOTE ABOUT OUR CEO AND FOUNDER: Jenn Larson is the creator and founder of The Teacher Next Door. With over 20 years of experience in the classroom and a Master's Degree in Curriculum and Instruction, Jenn specializes in creating resources for upper elementary students. Her goal is to support teachers by providing ready-to-use resources that target standards and help students grow in amazing ways.

REACH OUT AT: contact@the-teacher-next-door.com



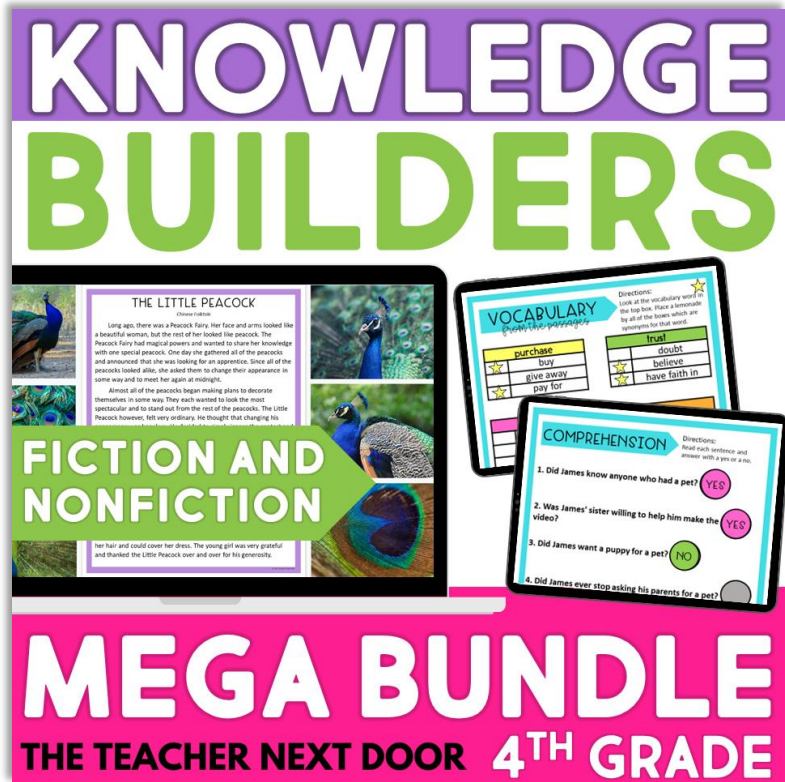
**THE TEACHER
NEXT DOOR**

TAKE BACK YOUR TEACHER TIME!

**KNOWLEDGE
BUILDERS**

**FICTION AND
NONFICTION**

MEGA BUNDLE
THE TEACHER NEXT DOOR 4TH GRADE



BUY NOW



NO MORE HOURS OF LESSON PLANNING!
**YOUR FUTURE TEACHER-SELF WILL
THANK YOU, YEAR AFTER YEAR.**

THE TEACHER NEXT DOOR